

Wiarthon Branch

Municipality: South Bruce Peninsula

Population of catchment area: 1,989 (2016 census)

Branch Type: Small

- ARUPLO Definition of small: Branches serving up to 5,000 population.

Assignable library space: 3,000 sq. ft.

- ARUPLO guideline: small branch 2,500 - 5,000 sq. ft.

Hours of Operation: 44 hours per week

- ARUPLO guideline: Small Branches: 20 -25 hours per week.

Staffing: 2.2 FTE

- ARUPLO guideline for staffing a small branch: 1-2.5 FTE

Collections: 13,468 items

- ARUPLO guidelines: small branch 6,000 - 12,000 items.

Public Internet Stations: 4

- ARUPLO guidelines: small branch 3-5 computers.

Seating (including computer seating): 30 seats

- ARUPLO guidelines: small branch: 15-30 seats.

Circulation January - June 2019: 23,723

- 2018: 21,460 transactions

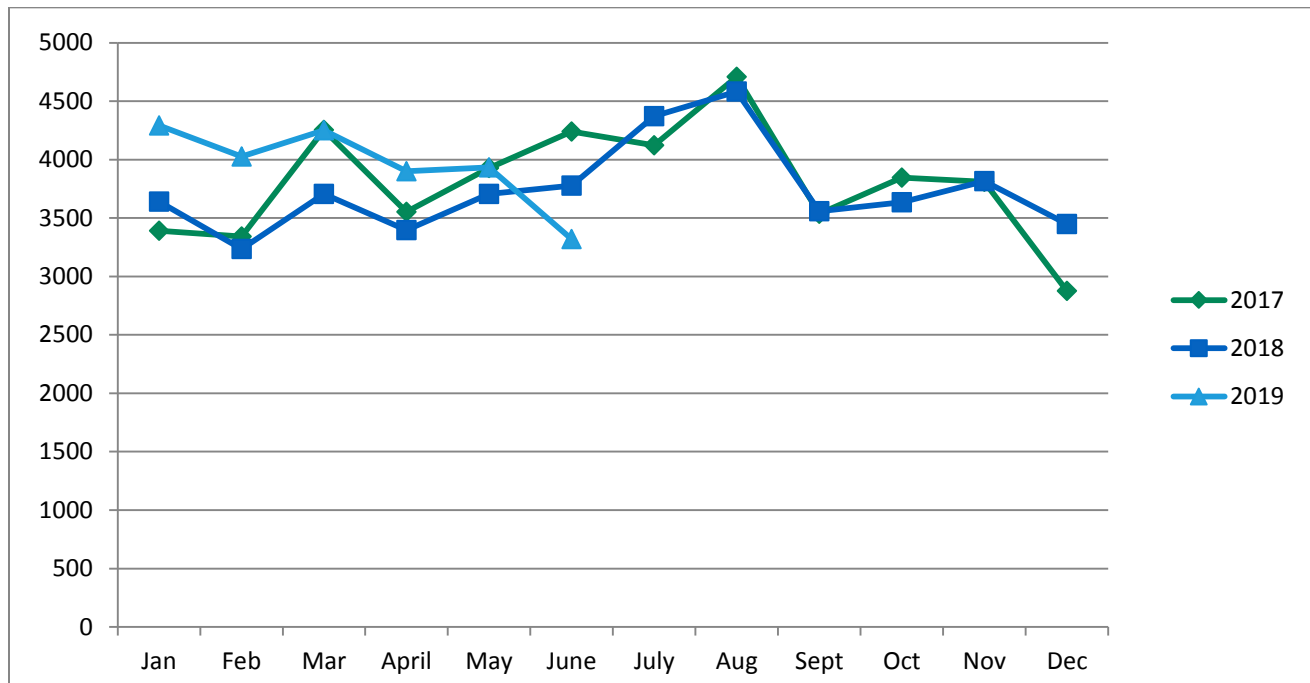
Membership

There are **1,870** registered members with active library membership (meaning their card has not expired).

Bruce County Public Library Branch Profile 2019

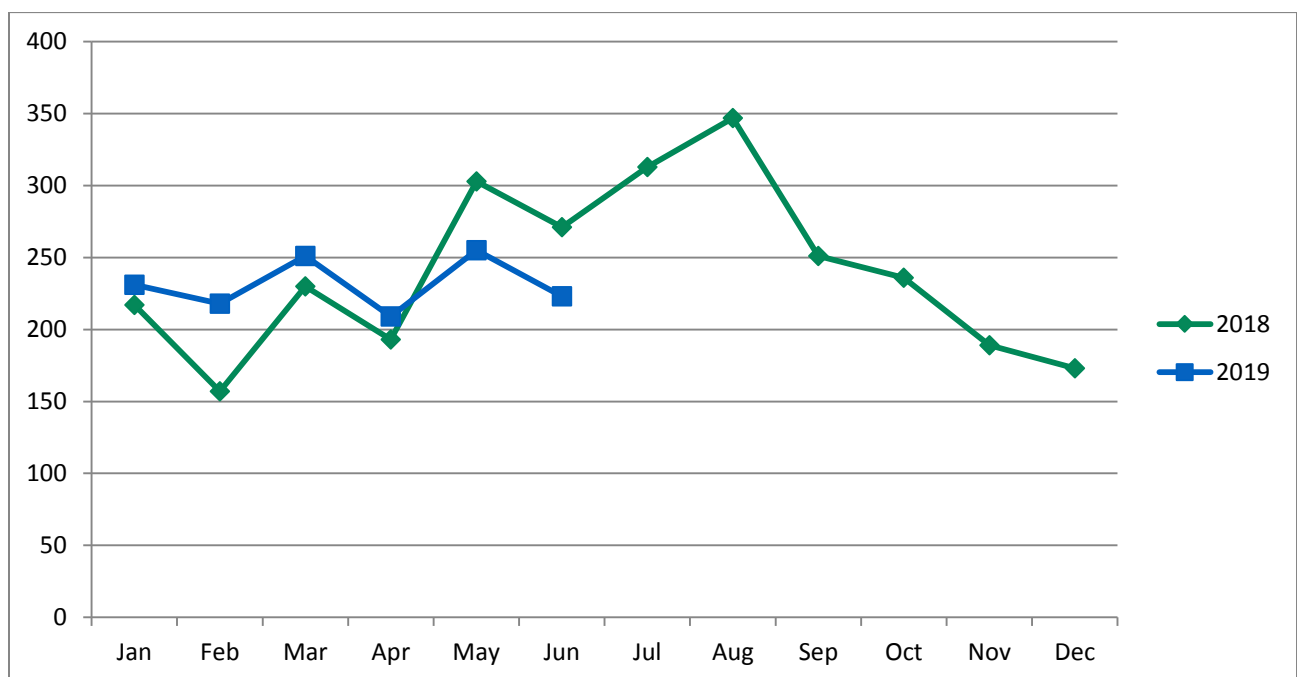


Warton Circulation 2017-2019 Comparison



Public Internet Use 2018-2019

This chart shows the number of Internet sessions per month on the branch public Internet stations.



Statistics Canada Demographic Data 2016

South Bruce Peninsula (Town)

Population: 8,416

Private Dwellings: 6,945

Median age of population: 54.5

% of the population aged 0 to 14 yrs: 12.2

% of population aged 15 to 64 yrs: 57.2

% of population aged 65 and over: 34.3

Mother tongue English: 7,820

Mother tongue French: 55

Mother tongue non-official languages: 360

Top non-official languages: German (120); Dutch (45); Italian (25); Portuguese (20); Polish (15)