

Paisley Branch

Municipality: Arran-Elderslie

Population of catchment area: 1,003 (2016 census)

Branch Type: Small

- ARUPLO Definition of small: Branches serving up to 5,000 population.

Assignable library space: 988 sq. ft.

- ARUPLO guideline: small branch 2,500 - 5,000 sq. ft.

Hours of Operation: 21 hours per week

- ARUPLO guideline: Small Branches: 20 -25 hours per week.

Staffing: 0.95 FTE

- ARUPLO guideline for staffing a small branch: 1-2.5 FTE

Collections: 4,655 items

- ARUPLO guidelines: small branch 6,000 - 12,000 items.

Public Internet Stations: 1

- ARUPLO guidelines: small branch 3-5 computers.

Seating (including computer seating): 16 seats

- ARUPLO guidelines: small branch: 15-30 seats.

Circulation January - June 2019: 4,625

- 2018: 4,443 transactions

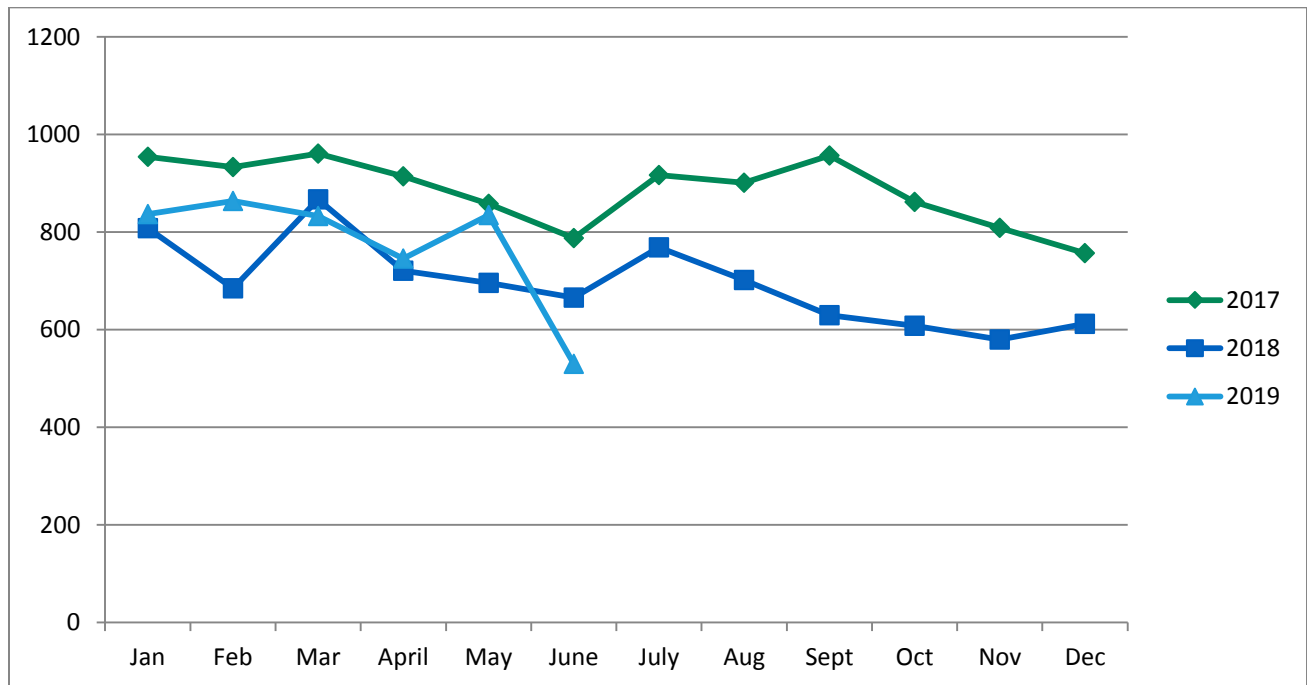
Membership

There are **279** registered members with active library membership (meaning their card has not expired).

Bruce County Public Library Branch Profile 2019

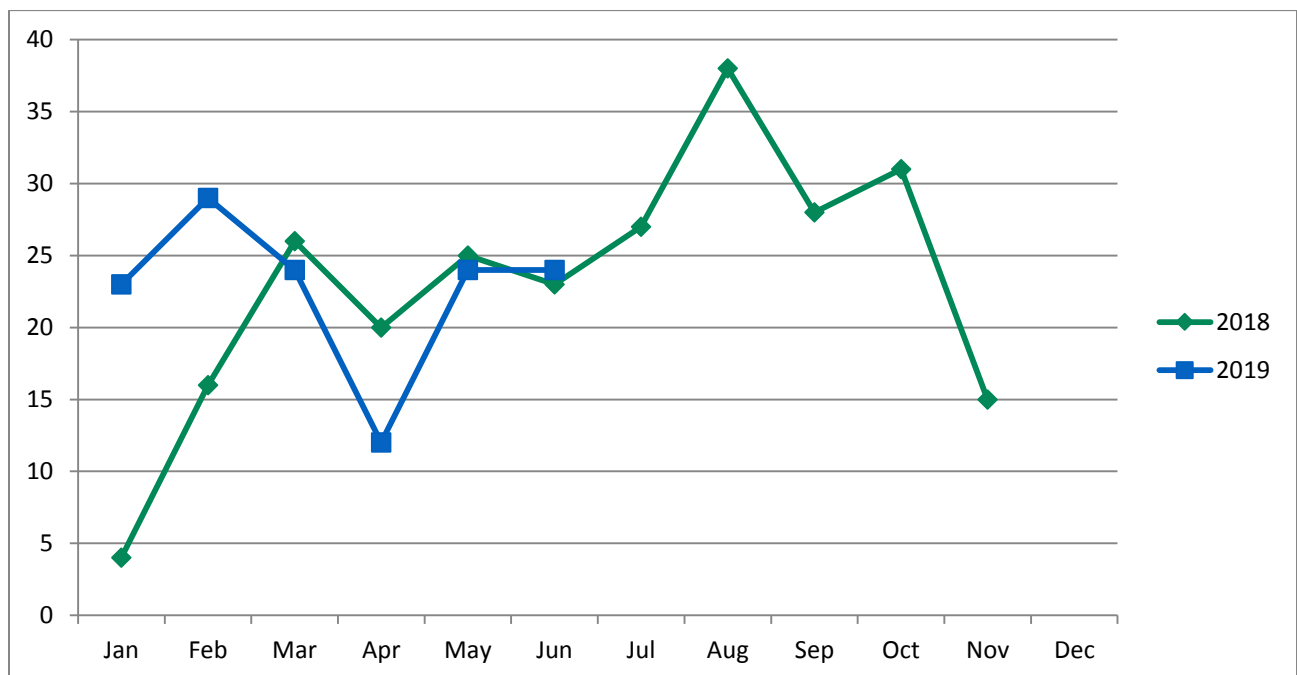


Paisley Circulation 2017-2019 Comparison



Public Internet Use 2018-2019

This chart shows the number of Internet sessions per month on the branch public Internet stations.



Bruce County Public Library Branch Profile 2019



*IT upgrades affected Jan 2018 stats
Statistics Canada Demographic Data 2016

Arran-Elderslie (Municipality)

Population: 6,803

Private Dwellings: 3,030

Median age of population: 41.8

% of the population aged 0 to 14 yrs: 19.7

% of population aged 15 to 64 yrs: 60.6

% of population aged 65 and over: 21.8

Mother tongue English: 6,190

Mother tongue French: 30

Mother tongue non-official languages: 480

Top non-official languages: German (300), Dutch (120), Mandarin (10)