



# Long-Term Care Homes Committee Report - for Information

**Title:** Bruce County Age-Friendly Strategy

**From:** Megan Garland, Director of Long-Term Care and Senior Services

**Date:** May 2, 2024

## Report Purpose:

This report is for information.

## Report Summary:

Bruce County will work towards being recognized as an Age-Friendly Community by the World Health Organization (WHO).

## Background:

An Age-Friendly community is defined as one that responds to both the opportunities and challenges of an aging population by creating a physical and social environment that supports independent active living and enables older people to continue contributing to all aspects of community life.

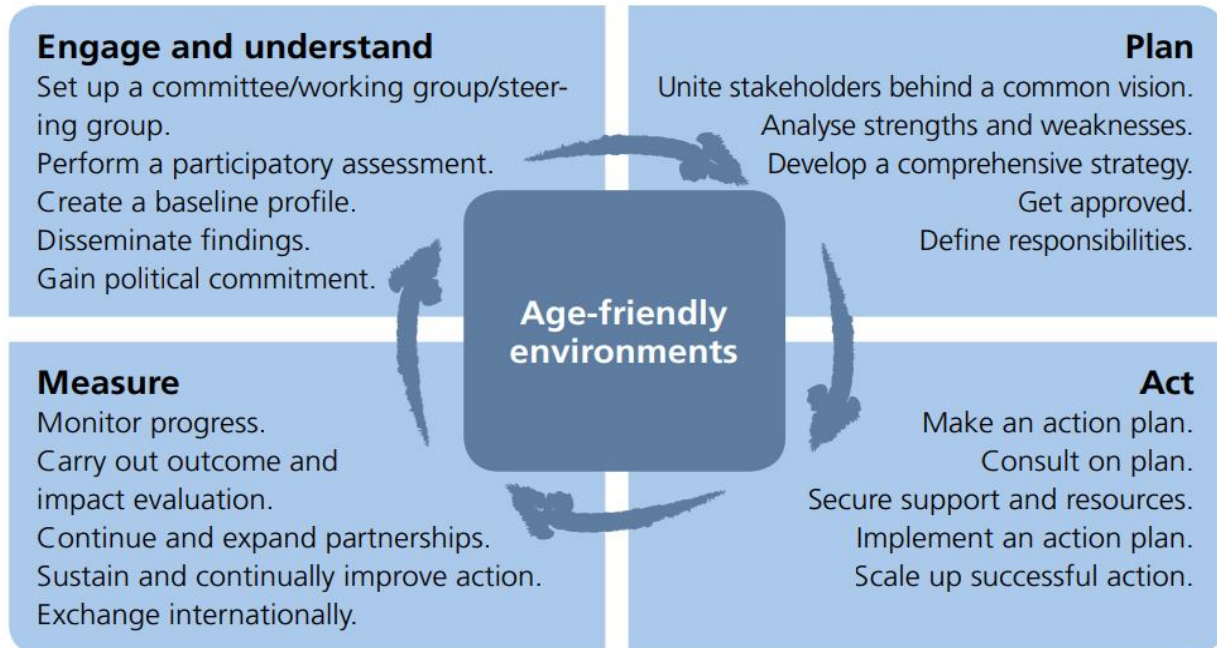
The World Health Organization identified eight domains of community life that overlap and intersect to affect an individual's personal well-being and their independent and active living in physical and social environments. These eight domains are the basis for the steps outlined in this guide and are depicted below.



## Process

We will be using the “Creating a More Inclusive Ontario Age-Friendly Community” Planning Guide for Municipalities and Community Organizations as a framework. The framework is based on four phases as listed below;

Fig. 1. Cycle of continuous improvement



Bruce County has begun the first phase “Engage and Understand” with the development of a Bruce County Age-Friendly Committee. The Bruce County Age-Friendly Committee consists of a mix of public representation, lower-tier municipalities and multi-sector(s) which support and provide services for seniors.

The Committee’s overarching goal is to complete all four phases of the framework and develop a Bruce County Age-Friendly Action Plan and ongoing strategy. For 2024 the Committee will focus on developing a terms of reference, guiding principles, a community profile, workplan and communication plan.

In 2025, the Committee will transition to the second phase “plan” which entails collecting detailed information about Age-Friendly priorities in the community through engagement/consultation with stakeholders which includes older adults, caregivers, community organizations, and service providers. The data collected through this phase will be the foundation of the development of an Age-Friendly Community Plan/Strategy.

### **Financial/Staffing/Legal/IT Considerations:**

There are no financial, staffing, legal or IT considerations associated with this report.

**Interdepartmental Consultation:**

No interdepartmental consultations were undertaken for this report.

**Link to Strategic Goals and Objectives:**

Community and Partnerships - Build a strong and inclusive community

**Approved for submission:**

Sean Morphy  
Deputy Chief Administrative Officer