



# Staff Report to Council - for Information

**Title:** Q3 Licensed Child Care and Early Years Report

**From:** Tina Metcalfe, Director Human Services

**Date:** December 7, 2023

---

## Report Purpose:

This report is for information.

## Report Summary:

The Licensed Child Care and Early Years Report provides an overview of community trends and service delivery statistics for Q3 2023.

## Background:

The priority of Bruce County Children's Services, a division of the Human Services department, is to ensure the local delivery of licensed child care and early years services is accessible, affordable, inclusive, and high-quality.

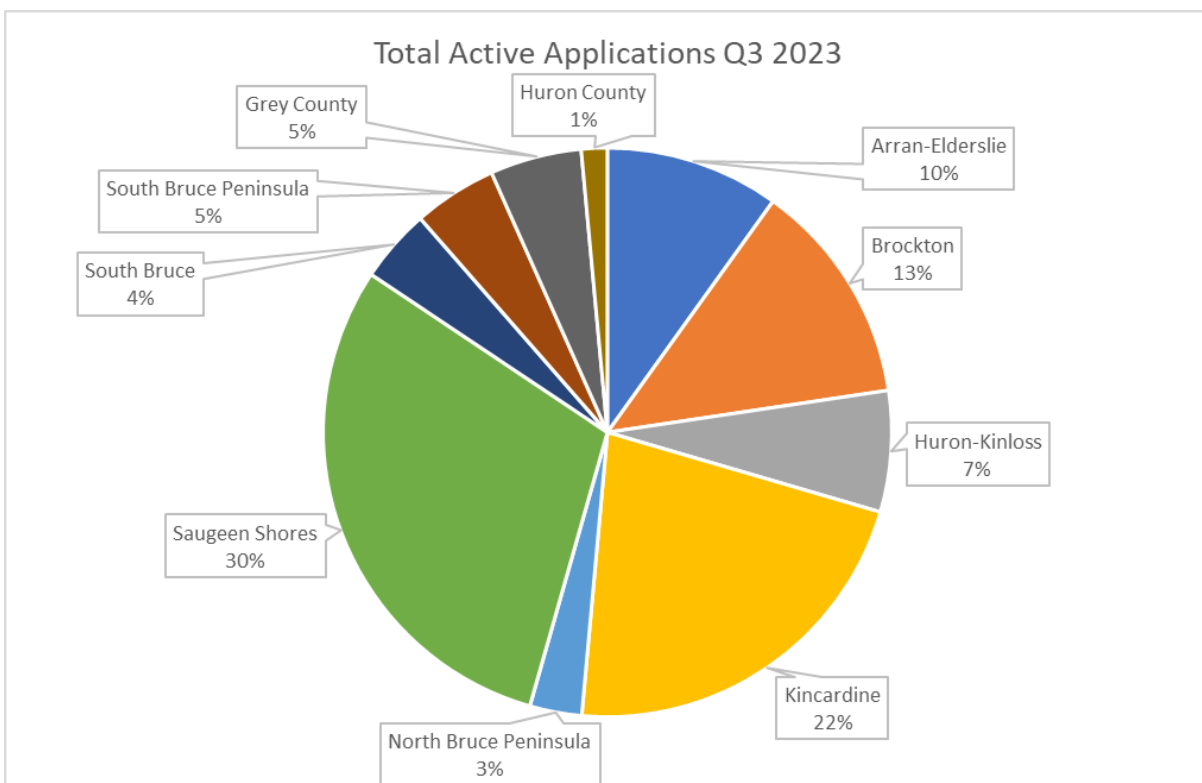
## Licensed Childcare Applications:

To better track, monitor, and respond to local system pressures, Bruce County uses OneList, an online childcare registration system, to help families locate and apply for licensed childcare. In turn, the system's data provides County staff with a snapshot of information, quantifying childcare needs by demographic area.

OneList provides details about the number of applications where the child has a placement but continues to wait for an opening at another program as compared to those with no placement. The total of these two is considered active applications.

The total number of active applications in Q3 2023 has increased by 151 as compared to Q3 2022. Detailed information regarding the number of applications by municipality can be found in the following table:

Applicant's Municipality	Children On Waitlist for Another Program Q3 2022	Children Not Placed Q3 2022	Total Active Applications Q3 2023	Children On Waitlist for Another Program Q3 2023	Children Not Placed Q3 2023
Arran-Elderslie	25	115	154	22	132
Brockton	30	132	198	33	165
Huron-Kinloss	19	74	107	26	81
Kincardine	86	249	341	80	261
North Bruce Peninsula	1	37	46	4	42
Saugeen Shores	87	336	466	124	342
South Bruce	6	55	65	7	58
South Bruce Peninsula	17	72	74	17	57
Grey County	0	51	81	5	76
Huron County	3	10	23	3	20
Wellington County	0	1	3	0	3
Other	0	22	21	0	21
<b>Total</b>	<b>274</b>	<b>1154</b>	<b>1579</b>	<b>321</b>	<b>1258</b>



The waitlist continues to be impacted by a shortage of Registered Early Childhood Educators, along with an increase in child care demand.

Bruce County staff is co-leading a Bruce Grey Registered Early Childhood Educator (ECE) Recruitment and Retention Working Group that includes membership and support from local colleges, boards of education, workplace engagement services and corporate communications, to develop and implement [local ECE recruitment and retention strategies](#).

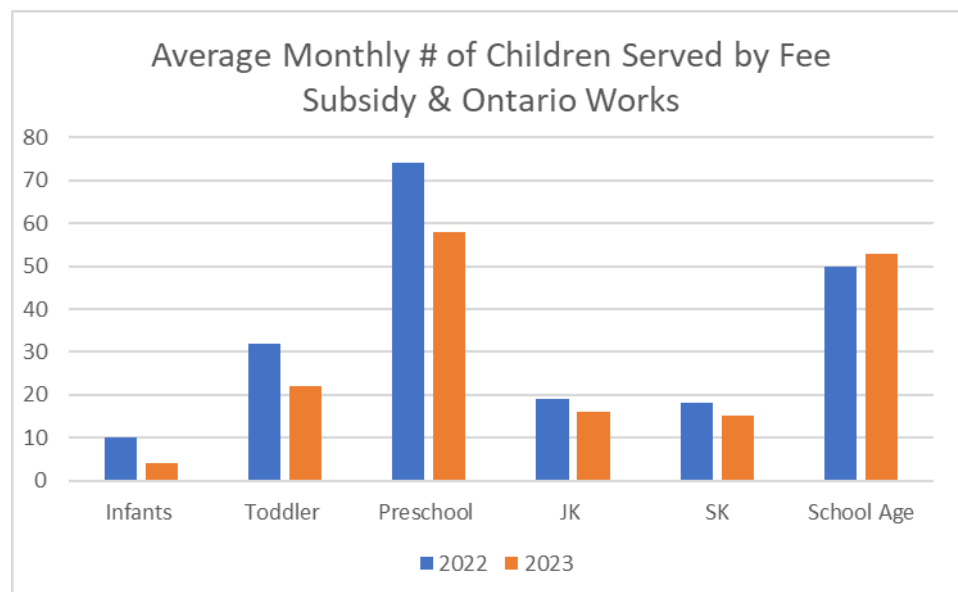
To support the need for more Registered Early Childhood Educators, Bruce County has partnered with Fanshawe College to offer a part-time accelerated Early Childhood Education program, offered locally in Port Elgin. As at the end of August, 32 students have enrolled in the program.

### **Fee Subsidy:**

For eligible families, child care fee subsidy support is available through Bruce County Children's Services, with priority given to families with income levels lower than \$40,000 per annum.

Age Group	2022	2023
Infants	10	4
Toddler	32	22
Preschool	74	58
JK	19	16
SK	18	15
School Age	50	53
<b>Total</b>	<b>203</b>	<b>168</b>

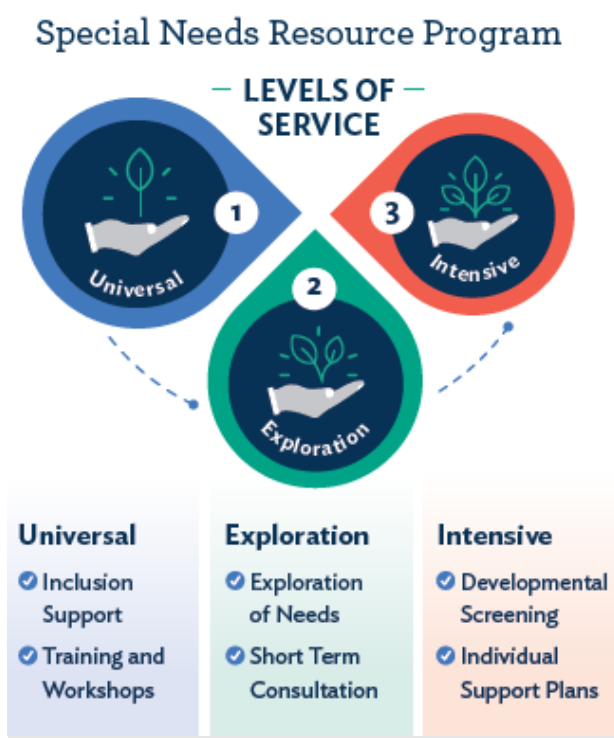
Below is a comparison of the number of children receiving subsidy at Q3 2022, as compared to Q3 2023:



At Q3 in 2023, the average monthly number of children served in Bruce County's fee subsidy program was 168. This represents a decrease of 35 as compared to Q3 in 2022 and can be attributed to parent fee reductions (25% beginning April 1, 2023 to December 31, 2023) resulting from the implementation of the new Canada-Wide Child Care and Early Years system.

### Special Needs Resource Program:

The Special Needs Resource Program supports the inclusion of children with special needs in licensed childcare programs, camps, and authorized recreation programs at no additional cost to parents or guardians. The three levels of services of the Special Needs Resource Program are summarized below:



The following table outlines the number of child care sites supported through universal supports as well as the number of children supported through exploration and intensive services in Q2 2023 compared to the same time in 2022. Q3 stats reflect children transitioning from the Special Needs Program to school.

Level of Service	Q2 2022	Q2 2023	Q3 2023
Level 1: Universal	48	48	48
Number of Children Supported - Level 2	50	42	36
Number of Children Supported - Level 3	69	72	70
Total number of children supported ((Levels 2-3)	167	162	154

### **EarlyON Child and Family Centres:**

EarlyON Child and Family Centres provide free in-person programs to help strengthen adult/child relationships, support parent education, and foster healthy child development. All families with children from birth to six years of age are encouraged to participate.

As noted in the table below, in Q3 2023 there was a decrease in the number of programs offered, noting that some outdoor programs were cancelled or had low participation due to extreme heat and significant rain (including thunder & lightning) events.

Between Q2 and Q3, Facebook changed how visits are calculated; “Profile Visits” have been added to the “Page Visits” calculation, resulting in a significant increase when compared to Q1 and Q2.

#### **EarlyON Child and Family Programs**

Program Delivery Method	Program Information	Q1 2023	Q2 2023	Q3 2023
In Person	Total Programs Offered	348	365	269
	Adult Visits	1697	1919	1361
	Child Visits	2131	2605	1702
Virtual	Facebook Page Visits	2800	2949	N/A
	Facebook Page & Profile Visits	N/A	N/A	6678
	Virtual Registered Program Sessions	6	0	0
	Adult Participants	13	0	0
	Child Participants	2	0	0

### **Financial/Staffing/Legal/IT Considerations:**

Staff monitor subsidy and eligibility closely to ensure compliance. Expenditures are forecasted monthly to ensure participant fee allocations do not exceed the annual budget.

### **Interdepartmental Consultation:**

There was no specific interdepartmental consultation required for this report.

### **Link to Strategic Goals and Objectives:**

Community and Partnerships - Build a strong and inclusive community

### **Link to Departmental Plan Goals and Objectives, if any:**

The coordinated management of Bruce County Child Care and Early Years programs and supports is in alignment with the [Child Care & Early Years' Service System Plan: 2019-2024.](#)

**Report Author:**

Angela Hopkins

Children's Services Manager

**Departmental Approval:**

Tina Metcalfe

Director, Human Services

**Approved for Submission:**

Christine MacDonald, Deputy Chief Administrative Officer