



## Committee Report

**To:** Councillor Mark Goetz, Chair and  
Members of the Human Services Committee

**From:** Tina Metcalfe  
Director of Human Services

**Date:** August 3, 2023

**Re:** Q2 Licensed Child Care and Early Years Report

---

### Staff Recommendation:

The Q2 2023 Licensed Child Care and Early Years Report is for information.

### Background:

The priority of Bruce County Children's Services, a division of the Human Services department, is to ensure the local delivery of licensed child care and early years services is accessible, affordable, inclusive, and high-quality.

The following performance indicators provide an overview of community trends and service delivery statistics for Q2 2023.

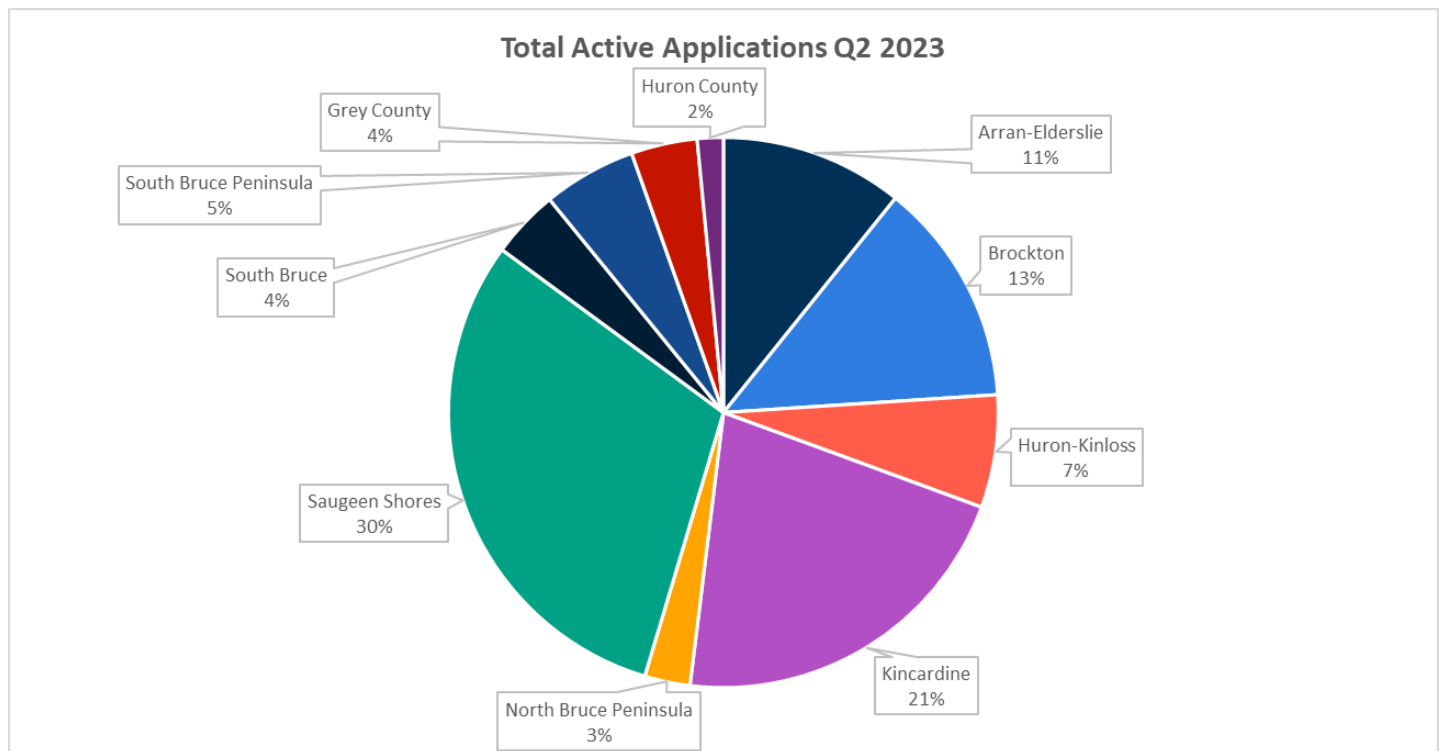
### Licensed Child Care Applications:

To better track, monitor, and respond to local system pressures, Bruce County uses OneList, an online child care registration system, to help families locate and apply for licensed child care. In turn, the system's data provides County staff with a snapshot of information, quantifying child care needs by demographic area.

OneList provides details about the number of applications where the child has a placement but continue to wait for an opening at another program as compared to those with no placement. The total of these two is considered active applications.

The total number of active applications in Q2 2023 has increased by 330 as compared to Q2 2022. Detailed information regarding the number of applications by municipality can be found in the table below.

Applicant's Municipality	Children On Waitlist For Another Program Q2 2022	Children Not Placed Q2 2022	Total Active Applications Q2 2023	Children On Waitlist For Another Program Q2 2023	Children Not Placed Q2 2023
Arran-Elderslie	14	89	169	27	142
Brockton	32	121	207	40	167
Huron-Kinloss	20	57	104	22	82
Kincardine	73	266	335	82	253
North Bruce Peninsula	1	16	42	3	39
Saugeen Shores	121	256	478	110	368
South Bruce	3	59	63	6	57
South Bruce Peninsula	10	37	86	21	65
Grey County	1	41	61	5	56
Huron County	0	17	24	3	21
Wellington County	0	3	4	0	4
Other	1	21	16	0	16
<b>Total</b>	<b>276</b>	<b>983</b>	<b>1589</b>	<b>319</b>	<b>1270</b>



The waitlist continues to be impacted by a lack Registered Early Childhood Educators, along with an increase in child care demand.

Bruce County staff is co-leading a Bruce Grey Registered Early Childhood Educator (ECE) Recruitment and Retention Working Group that includes membership and support from local colleges, boards of education, workplace engagement services and corporate communications, to develop and implement [local ECE recruitment and retention strategies](#).

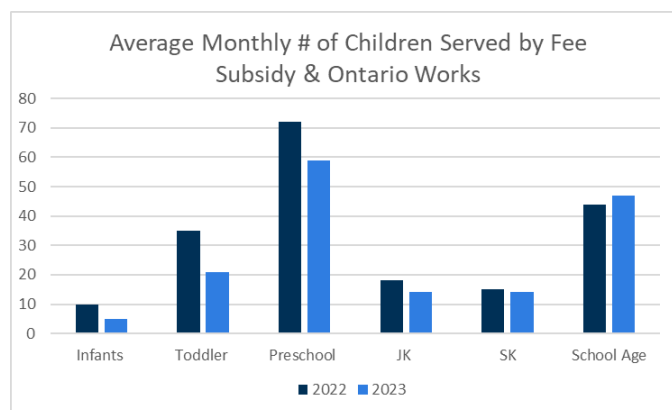
To support the need for more Registered Early Childhood Educators, Bruce County has partnered with Fanshawe College to offer a part-time accelerated Early Childhood Education program, offered locally in Port Elgin this fall. As at the end of June, 21 students have applied to the program. Program registration remains open and interested students can apply at <http://www.ontariocolleges.ca>.

### Fee Subsidy:

Child care fee subsidy support is available for eligible families through Bruce County Children's Services, with priority given to families with income levels lower than \$40,000 per annum.

Below is a comparison of the number of children receiving subsidy at Q2 2022, as compared to Q2 2023:

Age Group	2022	2023
Infants	10	5
Toddler	35	21
Preschool	72	59
JK	18	14
SK	15	14
School Age	44	47
<b>Total</b>	<b>194</b>	<b>160</b>

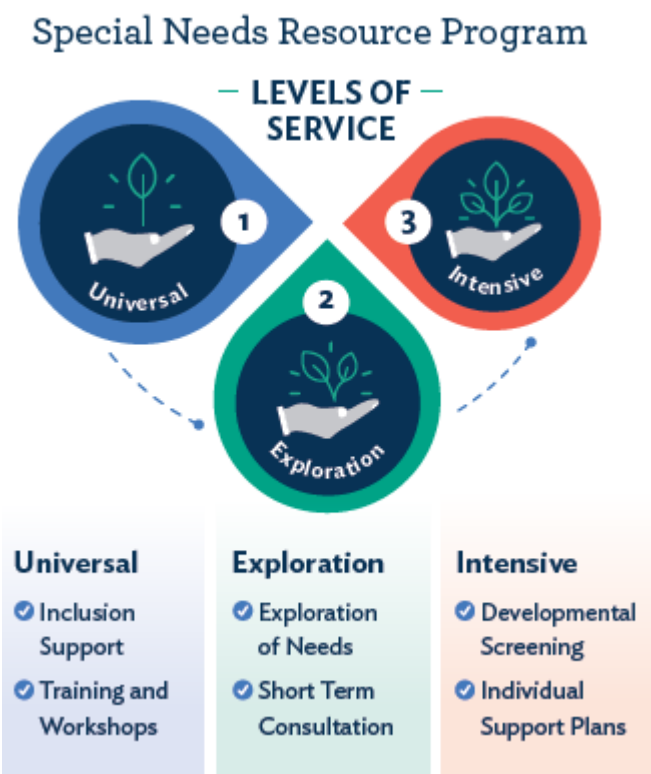


At end of Q2 2023, the average monthly number of children served in Bruce County's fee subsidy program was 160. This represents a decrease of 34 children as compared to Q2 in 2022 and can be attributed to parent fee reductions (52.75% since April 2022) resulting from the implementation of the new Canada-Wide Child Care and Early Years system.

### Special Needs Resource Program:

The Special Needs Resource Program supports the inclusion of children with special needs in licensed child care programs, camps, and authorized recreation programs at no additional cost to parents or guardians.

The three levels of services of the Special Needs Resource Program are summarized below:



The following table outlines the number of children child care sites supported through universal supports as well as the number of children supported through exploration and intensive services in Q2 2023 compared to the same time in 2022.

Level of Service	Q2 2022	Q2 2023
Level 1: Universal	48	48
Number of Children Supported Level 2	50	42
Number of Children Supported Level 3	69	72
Total number of children supported. (Levels 2-3)	167	162

**EarlyON Child and Family Centres:**

EarlyON Child and Family Centres provide free in-person programs to help strengthen adult/child relationships, support parent education, and foster healthy child development. All families with children from birth to six years of age are encouraged to participate.

As noted in the table below, there was an increase in program participation in Q2 2023 as compared to Q1. EarlyON offered an increase in outdoor programs based on learning about relationships with the land. In Q2, virtual programs continued to be offered but were

canceled due to low or no enrollment. EarlyON will plan virtual programming options again in the future if there is an interest from participants or a need.

EarlyOn Child and Family Programs		Q1 2023	Q2 2023
In Person	Total Programs Offered	348	365
	Adult Visits	1697	1919
	Child Visits	2131	2605
Virtual	Facebook Page Visits	2800	2949
	Virtual Registered Program Sessions	6	0
	Adult Participants	13	0
	Child Participants	2	0
EarlyON To Go	Number of Families Participating	90	89

#### **Financial/Staffing/Legal/IT Considerations:**

There are no financial, staffing, legal or IT considerations associated with this report.

Staff monitor subsidy and eligibility closely to ensure compliance. Expenditures are forecasted monthly to ensure participant fee allocations do not exceed the annual budget.

#### **Interdepartmental Consultation:**

There was no specific interdepartmental consultation required for this report.

#### **Link to Strategic Goals and Elements:**

Goal 1: Build a strong and inclusive community.

Goal 2: Enhance and grow partnerships.

Goal 4: Promote responsible growth.

The coordinated management of Bruce County Child Care and Early Years programs and supports is also in alignment with the [Child Care & Early Years' Service System Plan: 2019-2024.](#)

#### **Report Author:**

Angela Hopkins  
Children's Services Manager

#### **Departmental Approval:**

Tina Metcalfe  
Director, Human Services

**Approved for Submission:**

Christine MacDonald

Deputy Chief Administrative Officer