

Bruce County

Transit Demand & Feasibility Study

Planning & Development Committee
April 20, 2023

Project Background

- | | |
|--------------------------------|--|
| November 2021 | County applied for funding from the Public Transit Program Rural Transit Solution Fund to: <ul style="list-style-type: none">• Identify the demand and need for a public transit system, who the target audiences are and where the highest demand is; and• Develop a Clean Energy Public Transit System Plan |
| April 2022 | County received notice the funding application was successful |
| July 2022 | County issued an RFP to engage a consultant to undertake the study |
| September 2022 | Arcadis IBI Group was engaged to undertake the study |
| September 2022
- March 2023 | Background work, draft project vision, mission & goals, draft survey |

Project Team

Arcadis IBI Group

- Bruce Mori, M.Eng - Project Director
- David Forsey, P. Eng - Project Manager
- Chris Prentice - Senior Advisor
- Jeremy Cohen - Transit Planner
- Adam Duhatschek - Transit Planner
- Seth McDermott - Electrification Lead

Bruce County

- Project Lead - Claire Dodds, Director of Planning & Development
- Project Support & Implementation - Derek McCaughan, Acting Director of Transportation & Environmental Services

Funding

- Public Transit Program - Rural Transit Solution Fund (Industry Canada) - \$50,000
- County Budgeted Funds - \$100,000

Scope of Work

- Review existing transit services in and around the County;
- Review the provision of transit service in peer municipalities;
- Estimate demand for transit service and determine the travel the needs of the community under the short, medium and long-term;
- Estimate cost of providing transit service under different operating conditions;
- Consider needs of vulnerable populations and indigenous communities;
- Review cost and availability of different transit vehicles and their fuel sources;
- Consider variety of transit models (on-demand, fixed route, mobility service, ride share, etc.)

Scope of Work

- Select a preferred service type (on-demand, fixed route, ride share, mobility service, etc.);
- Select a preferred operating model (County-operated, or contracted to a private operator or public entity);
- Develop potential transit service alternatives that would best meet demand and community needs;
- Develop a high-level financial plan, including approximate capital costs (infrastructure, fleet), operating costs (hourly operations and maintenance), fare revenue; and
- Consult with the public and stakeholders

Public Consultation

- **Phase 1** - survey to solicit feedback on the study vision and develop understanding of local travel needs.
- **Phase 2** - survey to gather feedback on the proposed service approach and design to ensure that critical needs have been adequately addressed.

Stakeholder Engagement

Stakeholder engagement will be aligned with the same two phases of public engagement

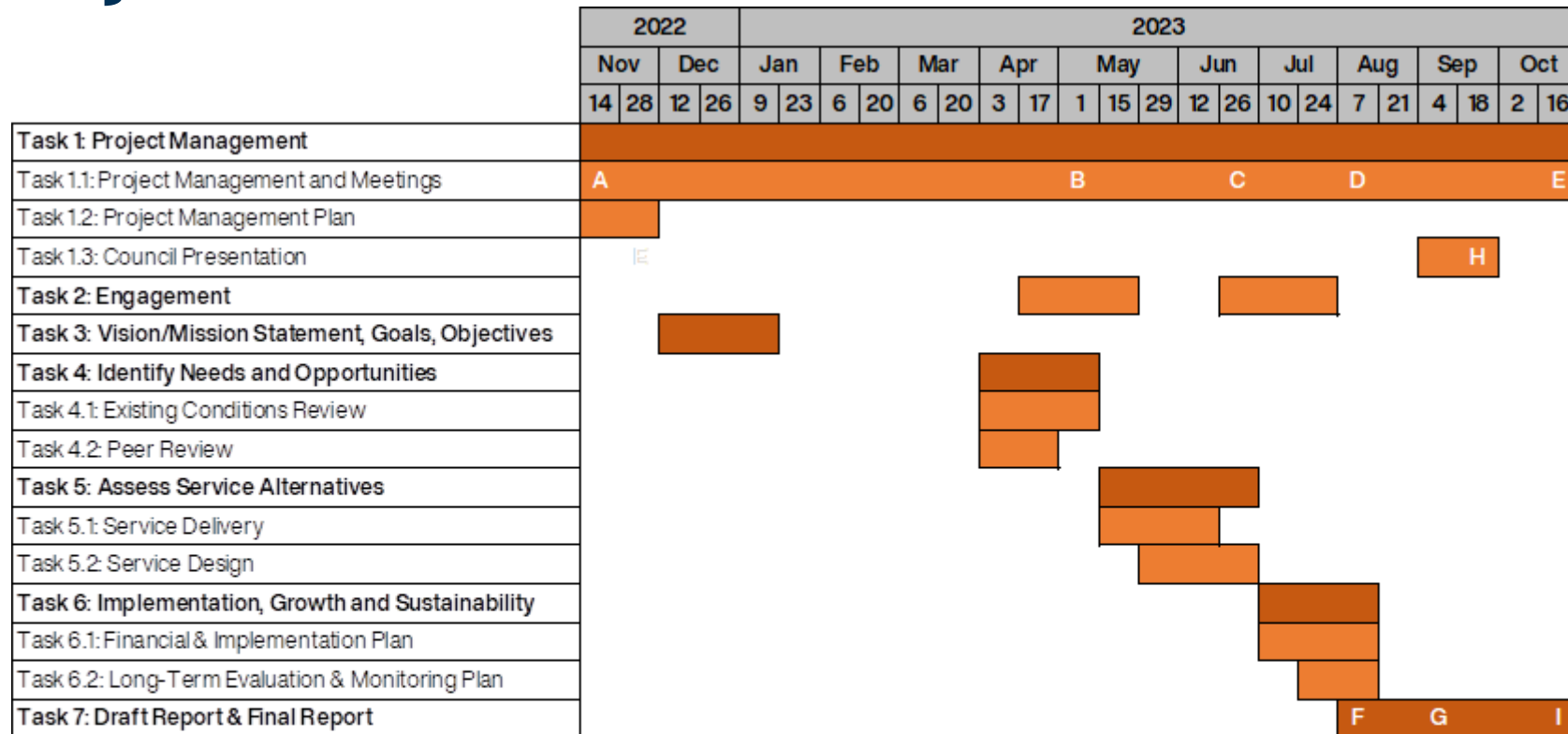
Phase 1 - In-person meeting with local stakeholders & First Nations to introduce the study and collect input on local travel needs.

Phase 2 - Present the key findings and initial recommendations of the study to solicit feedback from stakeholders who best understand local needs.

Stakeholder Groups

- Local & County Councillors
- Municipal staff
- Saugeen Ojibway Nation
- Organizations such as:
 - Home & Community Support Services of Grey-Bruce, Saugeen Mobility, Bruce Grey Poverty Task Force, Bruce Grey Child and Family Services
 - Georgian College, Bluewater District School Board, Bruce-Grey Catholic School Board
 - Large employers within the County

Project Timelines



Milestones/Deliverables

A Kick-Off Meeting	F Draft Report
B Update #1 Meeting	G Draft Final Report
C Update #2 Meeting	H Presentation to County Council
D Update #3 Meeting	I Final Report for Approval
E Finalization Meeting	

Final Report

- Summarize the findings of the public and stakeholder consultation
- Present the assessment of need and demand for transit
- Outline alternatives for service design and delivery
- Include a financial and implementation plan

Questions