



Committee Report

To: Councillor Mark Goetz, Chair and
Members of the Human Services Committee

From: Tina Metcalfe
Director of Human Services

Date: May 4, 2023

Re: Q1-2023 Licensed Child Care and Early Years Report

Staff Recommendation:

The Q1-2023 Licensed Child Care and Early Years Report is for information.

Background:

The priority of Bruce County Children's Services, a division of the Human Services department, is to ensure the local delivery of licensed child care and early years services is accessible, affordable, inclusive, and high-quality.

The following performance indicators provide an overview of community trends and service delivery statistics for Q1 2023.

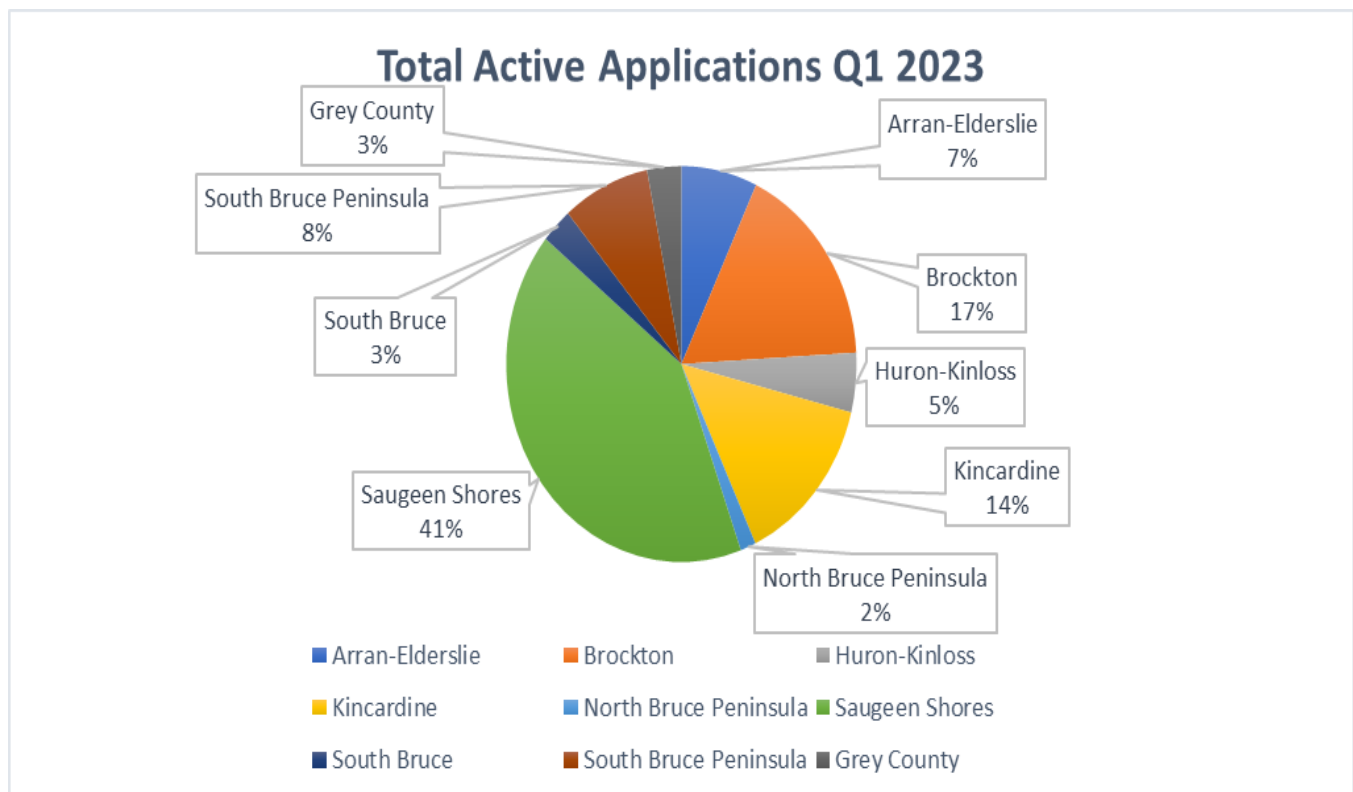
Licensed Child Care Applications:

To better track, monitor, and respond to local system pressures, Bruce County uses OneList, an online child care registration system, to help families locate and apply for licensed child care. In turn, the system's data provides County staff with a snapshot of information, quantifying child care needs by demographic area.

Beginning in Q1 2021, OneList has provided details about the number of applications where the child has a placement (but another program is requested) as compared to those with no placement.

Applicant's Municipality	Total Active Applications Q1 2022	Total Active Applications Q1 2023	Children Placed but on Waitlist for Another Program Q1 2023	Children Not Placed Q1 2023
Arran-Elderslie	122	107	30	77
Brockton	146	260	6	254
Huron-Kinloss	87	74	17	57
Kincardine	290	215	69	146
North Bruce Peninsula	32	22	11	11
Saugeen Shores	343	631	123	508

South Bruce	56	44	14	30
South Bruce Peninsula	71	123	9	114
Grey County	56	48	6	42
Huron County	20	5	0	5
Wellington County	1	1	0	1
Other	26	10	3	7
Total	1250	1540	288	1252



The total number of active child applications in Q1 2023 has increased as compared to Q1 in 2022 by 290. Detailed information regarding the number of applications by municipality can be found on the previous table.

Operating actuals continue to be impacted by a lack of Registered Early Childhood Educators, along with an increase in child care demand.

Bruce County staff is co-leading a Bruce Grey Registered Early Childhood Educator (ECE) Recruitment and Retention Working Group that includes membership and support from local colleges, boards of education, workplace engagement services and corporate communications, to develop and implement [local ECE recruitment and retention strategies](#).

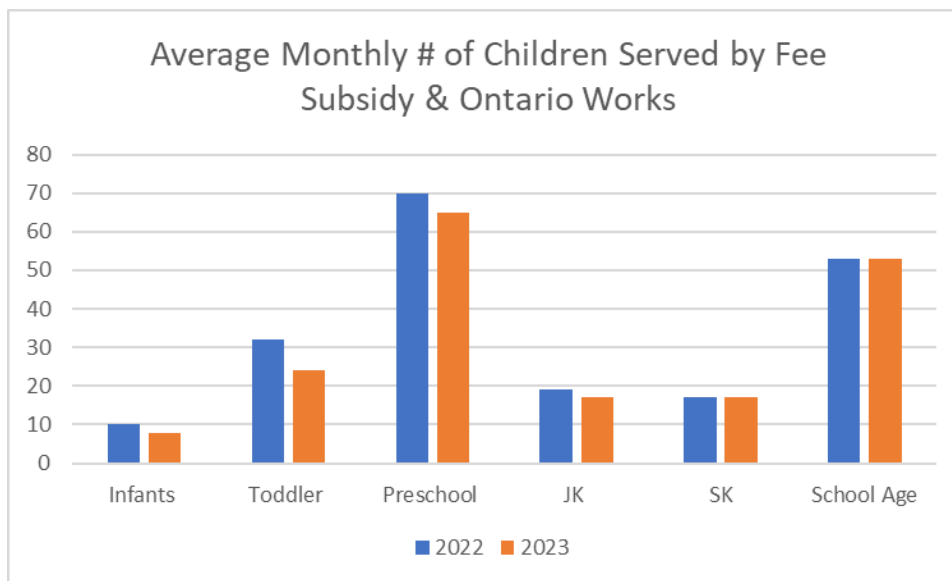
Fee Subsidy:

For eligible families, child care fee subsidy support is available through Bruce County Children's Services, with priority given to families with income levels lower than \$40,000 per annum.

Below is a comparison of the number of children receiving subsidy at Q1 2022, as compared to Q1 2023:

Age Group	2022	2023
Infants	10	8
Toddler	32	24
Preschool	70	65
JK	19	17
SK	17	17
School Age	53	53
Total	201	184

:

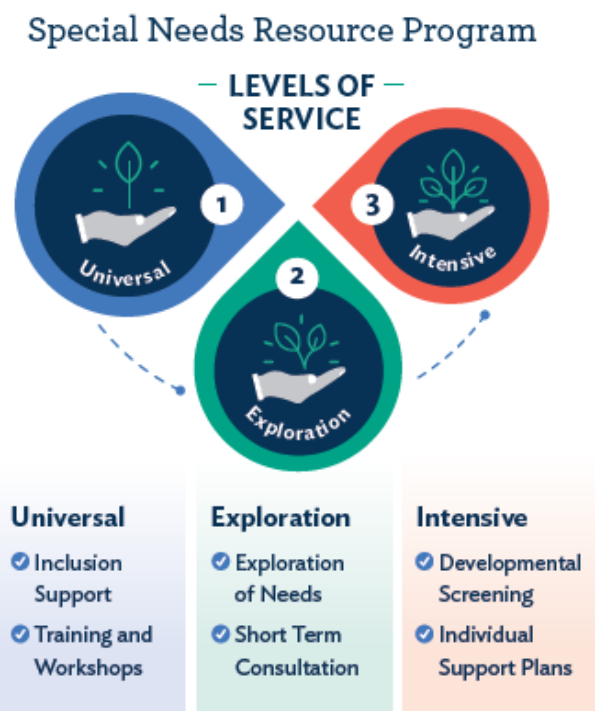


At Q1 in 2023, the average monthly number of children served in Bruce County's fee subsidy program was 184. This represents a decrease of 17 as compared to Q1 in 2022 and can be attributed to parent fee reductions resulting from the implementation of the new Canada-Wide Child Care and Early Years system.

Special Needs Resource Program:

The Special Needs Resource Program supports the inclusion of children with special needs in licensed childcare programs, camps, and authorized recreation programs at no additional cost to parents or guardians.

The three levels of services of the Special Needs Resource Program are summarized below:



The following table outlines the quarterly data for the Special Needs Resource Program for each quarter in 2023, as compared to 2022:

	Number of Sites and Classrooms Supported Level 1	Number of Children Supported Level 2	Number of Children Supported Level 3	Total (Levels 1-3)
Q1 2022	48	60	55	163
Q2 2022	48	50	69	167
Q3 2022	48	57	55	160
Q4 2022	48	35	58	141
Q1 2023	48	38	72	158

EarlyON Child and Family Centres:

EarlyON Child and Family Centres are community hubs where parents, caregivers, and children can find free in-person and virtual programs and services that build on their strengths and provide an opportunity to make connections and build relationships that are essential to realizing a child’s full potential.

EarlyON programs contribute to children’s learning, development, and well-being. All families with children from birth to six years of age are encouraged to participate.

From Q1 2022 to Q1 2023 there was an increase in in-person programming, that had previously been redirected to virtual programming due to the COVID-19 pandemic.

EarlyON Child and Family Programs		Q1 2022	Q1 2023
In-Person	Total In-Person Programs Offered	130	348
	Adult Visits	421	1697
	Child Visits	564	2131
Virtual	Facebook Followers	2123	2800
	Virtual Registered Program Sessions	17	6
	Adult Participants	18	13
	Child Participants	17	2
EarlyON To Go	Number of Families Participating	56	90

Financial/Staffing/Legal/IT Considerations:

Staff monitor subsidy and eligibility closely to ensure compliance. Expenditures are forecasted monthly to ensure participant fee allocations do not exceed the annual budget.

Interdepartmental Consultation:

There was no specific interdepartmental consultation required for this report.

Link to Strategic Goals and Elements:

Although there is no specific link to the Strategic Goals and Elements, the coordinated management of Bruce County Child Care and Early Years programs and supports is in keeping with our strategic values of efficient, coordinated governance, and client centric focus and is in alignment with the [Child Care & Early Years' Service System Plan: 2019-2024](#).

Approved for Submission:

Christine MacDonald
Deputy Chief Administrative Officer