



County of Bruce Economic Development Strategy

Research and Engagement Findings

Presented by: Lauren Millier, Executive Vice President

Date: October 21, 2021



Why is Bruce County doing this Strategy?

- Bruce County is highly invested in economic development
- Bruce County wants to work with Member Municipalities to:
 - Enhance programs
 - Learn about business resilience
 - Look to opportunities/strengths
 - Focus on what supports are needed
 - Understand how best to communicate





Research & Analysis

- *Background Review*
- *Economic Profile*
- *COVID-19 Recovery Efforts*
- *Interim Report #1*

Consultation & Engagement

- *Engagement Findings*
- *Areas of Focus for Strategy*
- *Interim Report #2*

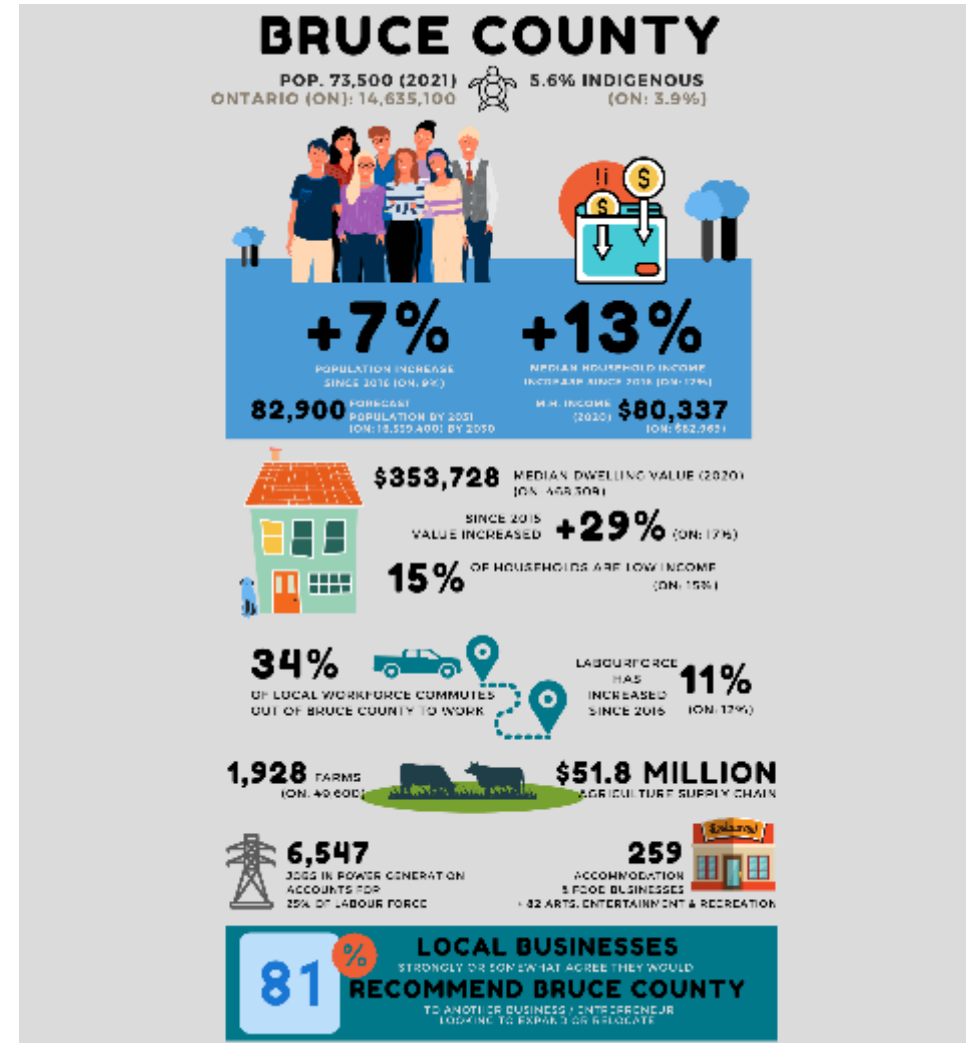
Reporting

- *Final Report*
- *Background material for Phases 4 and 5*



Research Phase

- Steadily growing population
- Increased labour force
- Net exporter of workers
- Micro and small businesses dominate
- Household income growing
- Dwelling values increasing
- Economic drivers: utilities, agriculture, accommodation and food (tourism)





Engagement Phase

- 27 stakeholder interviews
- 10 community stakeholder workshops
- 138 businesses surveyed



Engagement Summary Interim Report
June 2021

Bruce County
Economic Development Strategy





Recommended Directions



Demonstrate
Meaningful
Collaborations



Balance
Community
Transformation



Anticipate
Supply Chain
Opportunities



Stabilize
Workforce
Availability



Demonstrate Meaningful Collaborations

- Deepen the benefits of programs
- Team up, listen and customize
- Be prepared for out-of-the-box thinking





Balance Community Transformation

- Erase geographic boundaries
- Find the win-win
- Support Indigenous communities and business





Anticipate Supply Chain Opportunities

- Prepare the groundwork
- Target and coordinate business visits
- Respect all sectors
- Reward diversification





Stabilize Workforce Availability

- Mind the gaps
- Activate advocacy

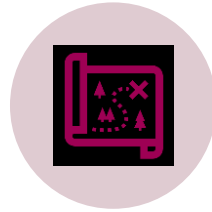




Recommended Directions



Demonstrate
Meaningful
Collaborations



Balance Community
Transformation



Anticipate Supply
Chain Opportunities



Stabilize Workforce
Availability



THANK YOU!

Lauren Millier, Executive Vice President, lmillier@mdbinsight.com

