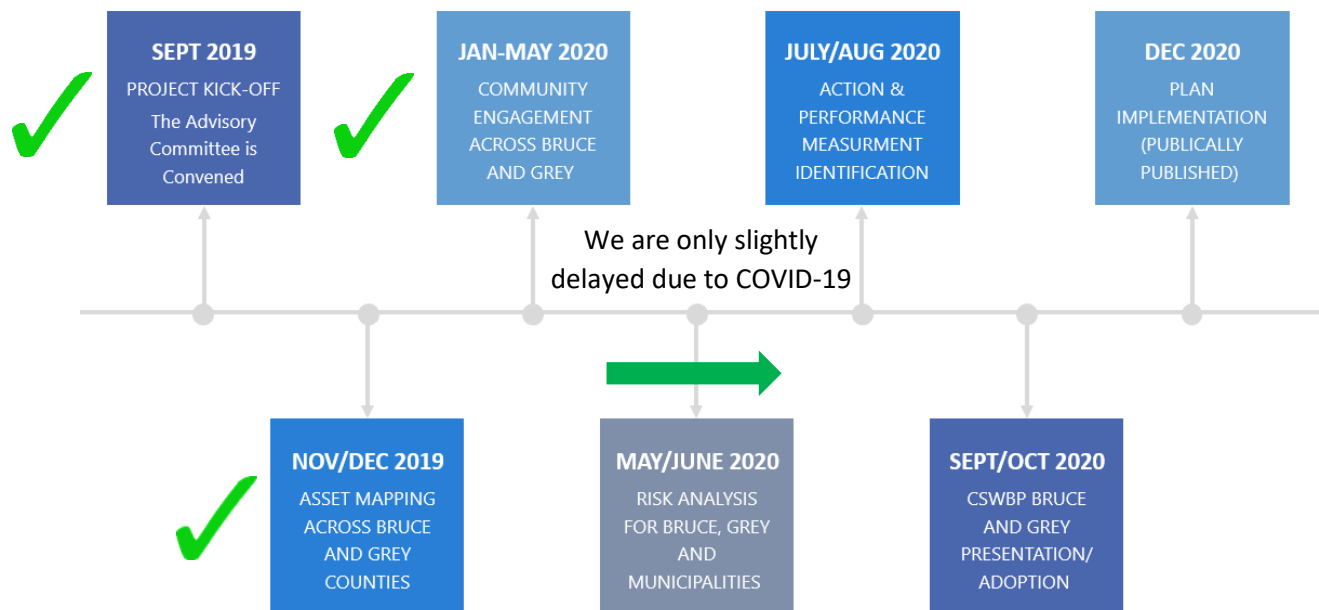


COMMUNITY SAFETY AND WELL-BEING PLANNING: The Municipalities of Bruce and Grey

STATUS UPDATE & KEY MESSAGES – JUNE 2020

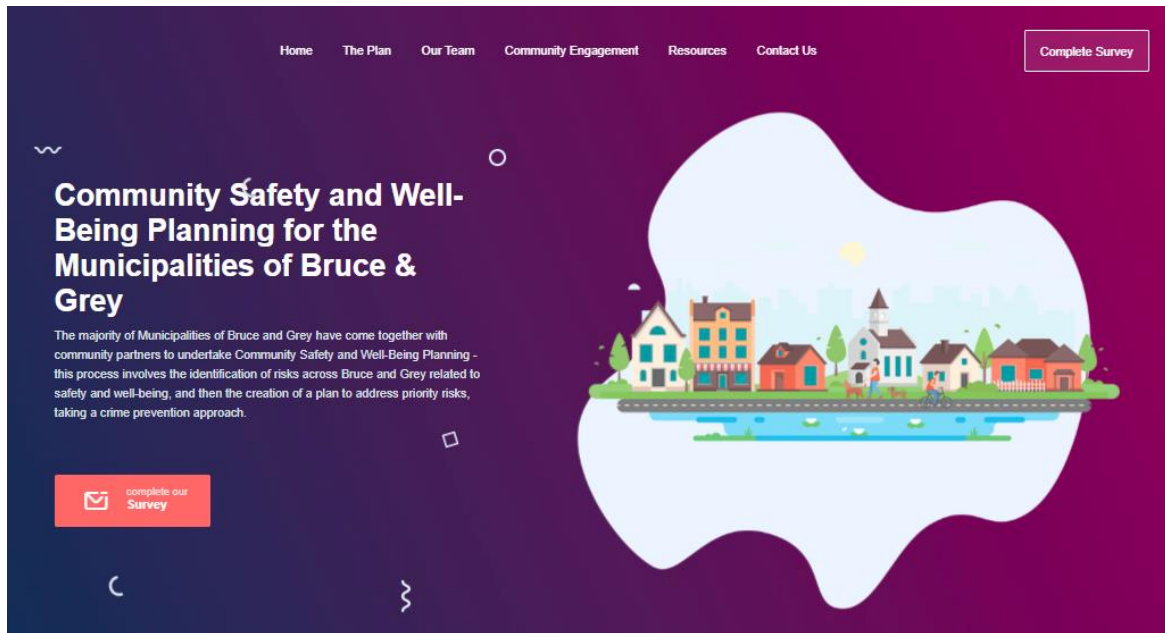
Bruce and Grey CSWBP Timeline:



Actions Taken to Date:

- ✓ **A Coordinator was hired** September 2019 (contract ends October 31, 2020) to support the creation of a shared/collaborative Community Safety and Well-Being Plan for the Municipalities of Bruce and Grey. Bruce County, Bruce Municipalities, and Grey County contributed funding to support this project.
- ✓ **Advisory Committee Meetings** were held September 27, 2019 and November 29, 2019.
- ✓ **A Project Plan & Project Timeline** were created; **Steering Committee Terms of Reference** were approved and distributed; **Advisory Committee Terms of Reference** were approved and distributed; a **Governance Framework** for the Bruce and Grey CSWBP process was drafted, revised and approved by Advisory Committee members.
- ✓ **A Community Safety and Well-Being Plan Agreement** is being approved and signed by all participating Municipalities.
- ✓ **A Communication Plan** and **Engagement Plan** were created and implemented, with feedback from Advisory Committee members.
- ✓ **CSWBP Website Launch** – for information-sharing with the general public, as well as document sharing with members of the Advisory Committee; **the website was launched February 1, 2020, and 2,636 members of the public have visited**; residents are also able

to contact the Coordinator through the website; [visit CSWBP-BruceGrey.ca HERE](https://www.brucegrey.ca/cswbp).



- ✓ **A Community Engagement Survey** was released February 1, 2020, through Bruce and Grey County and Municipal media releases, broad distribution through Advisory Committee partners (websites, social media), and distribution through 211 to over 1800 community providers; due to the impacts of COVID-19 on participating agencies, third party supports have been retained to complete data analysis, and results will be shared on BGDISC, the Bruce Grey Data Information-Sharing Collaborative (a public data-sharing website); **as of March 22, 2020 at midnight, when the survey closed, 1,921 surveys had been received**, with representation from each Municipality as follows:

| Bruce County: 876 responses | | Grey County: 918 responses | |
|-----------------------------|--------------|----------------------------|--------------|
| Arran-Elderslie | 80 (9.13%) | Owen Sound | 266 (28.98%) |
| Brockton | 91 (10.39%) | Grey Highlands | 67 (7.30%) |
| Kincardine | 98 (11.19%) | Southgate | 78 (8.50%) |
| Northern Bruce Peninsula | 92 (10.50%) | West Grey | 90 (9.80%) |
| South Bruce | 66 (7.53%) | Hanover | 98 (10.68%) |
| Saugeen Shores | 283 (32.31%) | Town of The Blue Mountains | 71 (7.73%) |
| South Bruce Peninsula | 73 (8.33%) | Chatsworth | 71 (7.73%) |
| Huron-Kinloss | 93 (10.62%) | Georgian Bluffs | 101 (11.00%) |

** The percentage represents the percentage of the County responses (876 or 918), not the percentage of the total surveys submitted in Bruce and Grey collectively (1,921). Note: Responses were received from Meaford residents and are not included in this list.*

- ✓ **Initial Data Analysis of Resident Perceptions and Opinions** for all of Bruce and Grey tells us the following (these details are not all-inclusive of the initial survey results):
 - 85.2% of respondents are either satisfied or very satisfied with their life as a whole

- 59.85% of respondents describe their sense of belonging to their community as either strong or very strong; 29.07% feel their belonging is neither weak nor strong
- 75.76% of respondents recommend their community as a place for others to live
- 73.74% of respondents are satisfied or very satisfied with their relationship with their neighbours
- 72% of respondents are satisfied/very satisfied with their feelings of personal safety
- 53.47% of respondents feel crime has increased somewhat or substantially over the past 3 years; 39.95% feel it has remained the same
- 48.13% of respondents feel we have lower rates of crime compared to other communities in Ontario; 40.57% feel we have about the same as other communities
- Respondents ranked the following as the top 3 priorities in Bruce and Grey: 1) Addictions/Substance Misuse; 2) Mental Health; and 3) Crime Prevention

Work Currently Underway:

- **Asset Mapping** of programs, services and strategies currently in place to reduce risk across Bruce and Grey Counties *is continuing* throughout the next phase of the project.
- **Detailed Data Analysis** of survey results for Bruce and Grey, individual counties, and each participating municipality is occurring now, with further results expected to be shared in July 2020.
- **Risk Analysis/Validation** – risks from the survey results will be analyzed against available local data in July 2020, and priority risks will be confirmed for the region, counties, and individual municipalities; these will inform the final Plan.

Phases of Work Still to Come:

- ▶ **Identification of Strategies to Address Priority Risk** – this will include the identification/creation of “Action Teams” in our communities that will tackle priority risks; these Action Teams could already be in existence, or could be collaboratively created, based on the Priority Risks identified; the Plan will include priority risks for the entire region of Bruce and Grey, as well as Municipal profiles that will identify any geographically-specific (municipally-driven) risks.
- ▶ **Performance Measurement Framework & Sustainability Plan** – the work of CSWBP will continue beyond the Plan development phase; recommendations will be made to the Advisory Committee regarding resources required to implement, monitor, evaluate and report on the plan beyond October 2020.
- ▶ **Approval of the Bruce and Grey CSWBP** – all municipalities will be in the position to approve the CSWBP for public posting by January 1, 2021.